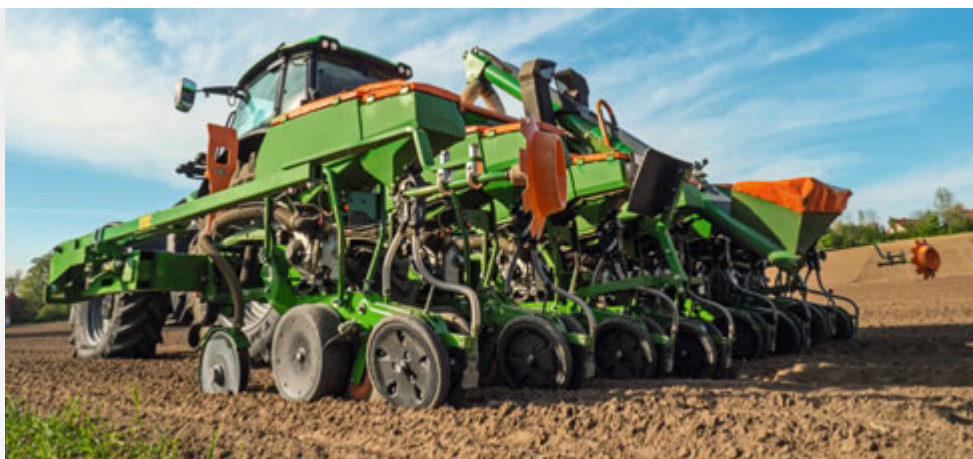


# Technical data: Precea precision air seeder

Model	Precea 3000-A	Precea 3000-AFCC	Precea 3000	Precea 3300	Precea 4500	Precea 6000
Equipment option	Super	Super	Special/Super	Special/Super	Special/Super	Special/Super
Frame execution	Mounted	Harrow-mounted seed drill + mounted front hopper	rigid	rigid	rigid	rigid
Working width (m)	3.00	3.00	2.70–3.20	3.80	3.50–4.80	5.40–6.20
Number of sowing units	4, 5, 6			5, 7	5, 6, 7, 8	8, 9, 12
Possible row spacing (cm)	50, 60, 75	50, 60, 70, 75	45, 50, 60, 65, 70, 75, 80	50, 70, 75	45, 50, 60, 65, 70, 75, 80	
Transport width (m) on 75 cm row spacing	3.00			3.30	4.50	6.20
Transport length from (m)	3.05	3.05	2.00			
Singling drive	electric	electric	Special mechanical / Super electric			
Drive: fertiliser metering	electric	electric	Special mechanical / Super electric			
Operational speed (km/h)	3–15	3–12	Special 3–12 / Super 3–15			
Seed spacing	3.1 cm to 86.9 cm depending on the singling disc used					
Singling unit	Singling discs for maize, sunflowers, sugar beet, rape, soya, sorghum, field beans, peas					
Fertiliser hopper capacity (l)	950	1,600/2,200	950 / 1,250			
Seed hopper capacity (l)	55 / 70					

Illustrations, content and technical data are not binding and may differ depending on the level of equipment. Country-specific road traffic regulations apply and must be complied with, meaning that special approval may be required. The permissible axle loads and total weights of the tractor have to be checked. Not all the listed combination options are possible with all tractor manufacturers.



Model	Precea 4500-2/Precea 4500-2FCC			Precea 6000-2	Precea 6000-2CC	Precea 6000-2FCC
Equipment option	Special/Super			Special/Super	Special/Super	Super
Frame execution	single	2-fold	variable*	folding		
Working width (m)	3.60–4.80	4.20–4.80	2.70–4.80	5.40–6.80		
Number of sowing units	6, 7			8, 9, 12	8, 9	8, 9, 12
Possible row spacing (cm)	60, 65, 70, 75, 80	60, 70, 75, 80	45–80	45, 50, 60, 65, 70, 75, 80	60, 70, 75, 80	45, 50, 60, 65, 70, 75, 80
Transport width (m) on 75 cm row spacing	3.30	3.00		3.00		
Transport length from (m)	2.00		2.30	2.00	2.50	2.00 + FTender
Singling drive	Special mechanical / Super electric					
Drive: fertiliser metering	Special mechanical / Super electric					
Operational speed (km/h)	Special 3–12 / Super 3–15					
Seed spacing	3.1 cm to 86.9 cm depending on the singling disc used					
Singling unit	Singling discs for maize, sunflowers, sugar beet, rape, soya, sorghum, field beans, peas					
Fertiliser hopper capacity (l)	950 / 1,250 or 1,600 / 2,000			–	950 / 1,250	1,600 / 2,200
Seed hopper capacity (l)	55 / 70					

\* Only available in Super version

Illustrations, content and technical data are not binding and may differ depending on the level of equipment. Country-specific road traffic regulations apply and must be complied with, meaning that special approval may be required. The permissible axle loads and total weights of the tractor have to be checked. Not all the listed combination options are possible with all tractor manufacturers.