



THE TRAILER IN FRONT

PRODUCT RANGE  
JANUARY  
2023



# MAKING EVERY SECOND COUNT



**At Bailey we're very aware that every second counts for our customers, their trailers have to work hard. Therefore, our aim is straightforward: – to supply robust and reliable trailers that keep on going whatever the load, terrain or conditions.**

We are engineers driven by our founding principles of innovation and quality. We're always looking to improve our products, to make them even better for our customers. To meet this drive, we've continuously invested in our plant: - new machine tools, new methods and new buildings.

Farming is in our DNA too, the Bailey family farmed in Lincolnshire over several generations. When you look at our products a lot of ideas have been farmer's ideas, we listen, we understand and if it works we fit it. We're here to produce trailers that the customer wants.

Our longest serving dealer has been with us since 1983, today our comprehensive range of trailers are sold and backed up by a nationwide dealer network.

We're ready to make a difference to you and your business. Please contact your Bailey dealer today and let's start talking, you will find our dealer network at [baileytrailers.co.uk](http://baileytrailers.co.uk). If you would like a tour of our factory we are always happy to oblige and I look forward to welcoming you soon.

**Michael Bailey – Managing Director**

# CONTENTS



<b>INTRODUCTION</b>	<b>2</b>	<b>CONTRACT TIPPER</b>	<b>26-27</b>	<b>HIGH LIFT</b>	<b>47</b>
<b>OUR HERITAGE</b>	<b>4-5</b>	<b>AGRICULTURAL DUMPER</b>	<b>28-29</b>	<b>FUEL BOWSER</b>	<b>48</b>
<b>TIMELINE</b>	<b>6-7</b>	<b>CONTRACT DUMPER</b>	<b>30-31</b>	<b>WATER BOWSER</b>	<b>49</b>
<b>A PROVEN TRACK RECORD</b>	<b>8-9</b>	<b>LOW LOADERS</b>	<b>34-39</b>	<b>PEOPLE CARRIER</b>	<b>50</b>
<b>TB</b>	<b>12-17</b>	<b>BALE &amp; PALLET</b>	<b>40-42</b>	<b>TYRES</b>	<b>51</b>
<b>ROOT SPECIALS</b>	<b>18-19</b>	<b>LIVESTOCK CONTAINER</b>	<b>43</b>	<b>OPTIONAL EXTRAS</b>	<b>54-55</b>
<b>BEETEAPER</b>	<b>20-21</b>	<b>DROPSIDES</b>	<b>46</b>	<b>FEATURES &amp; BENEFITS</b>	<b>56-57</b>
<b>SHEETING SYSTEMS</b>	<b>24-25</b>	<b>BLOWER TRAILER</b>	<b>47</b>		

# FROM ONE MAN IN A WORKSHOP TO A MAJOR GLOBAL BRAND

In February 1982 the very first Bailey trailer rolled off the production line. Designed and built by Tom Bailey from his workshop in Aunsby, Lincolnshire, this innovative quality-built trailer soon caught the attention of the local farming community, many of whom remain Bailey customers today.



The success of our first trailer and subsequent new products saw us expand our facility at Aunsby to meet the growing demand. However, by 2010 our business had outgrown Aunsby and we moved to our current, purpose-built 70,000 sq ft site in Sleaford, Lincolnshire.

Bailey is now the leading brand of agricultural trailers in the UK; we also supply trailers to construction, utilities, amenities and market garden businesses. Our products are sold and supported by a nationwide dealer network, we are also represented by dealerships in Scandinavia and New Zealand.



Our story is one of innovation, ambition and sheer hard work. In just over 40 years we have grown from one man in a workshop into a major global brand. We remain a family business across three generations; proud of our heritage, driven by our core values and founding principles and committed to the success of our customers.





**"THE ONLY THING THAT MAKES  
A GOOD TRAILER IS IT SUITS  
THE CUSTOMER DOWN TO THE GROUND."**

**TOM BAILEY  
FOUNDER, BAILEY TRAILERS**



**1982/1987**  
 1982 First Bailey trailer launched by Tom Bailey in February  
 1983 Bale Trailer is launched  
 1983 First dealer is appointed

**1988/1993**  
 1988 Contract Dumper introduced  
 1990 High Lift Trailer launched  
 1991 Aunsby site purchased and expanded

**1994/1997**  
 1994 Drop Deck Low Loader is launched  
 1997 Fuel Bowser is introduced

**1998/2003**  
 1998 Beeteaper Trailer is launched  
 2002 The new green & silver colour scheme is introduced  
 2002 New machine shop installed

**2004/2007**  
 2006 Laser cutter installed  
 2007 Contract Tipper  
 2007 25th anniversary of Bailey Trailers



1982 / 1983 / 1984 / 1985 / 1986 / 1987 / 1988 / 1989 / 1990 / 1991 / 1992 / 1993 / 1994 / 1995 / 1996 / 1997 / 1998 / 1999 / 2000 / 2001 / 2002





**2008**  
 ing technology  
 pper is launched  
 rsary

**2009/2012**  
 2010 Moved to a purpose-built 70,000 sq ft factory in Sleaford, Lincolnshire  
 2010 Introduction of commercial braking system on all large trailers

**2013/2017**  
 2015 New fitting and finishing facility is opened  
 2017 Ejector Trailer launched

**2018/2019**  
 2018 TB2 launched  
 2018 Hydraulic Bale Clamps introduced  
 2019 The first robotic welders installed

**2020/2023**  
 2020 Two robotic welders installed  
 2021 New machine shop and conference rooms  
 2021 New laser cutting technology installed



/ 2003 / 2004 / 2005 / 2006 / 2007 / 2008 / 2009 / 2010 / 2011 / 2012 / 2013 / 2014 / 2015 / 2016 / 2017 / 2018 / 2019 / 2020 / 2021 / 2023 / 2023

# A PROVEN TRACK RECORD FOR QUALITY, SAFETY, RELIABILITY AND DURABILITY

## WHATEVER YOUR WORK



Agriculture



Construction



Market Gardens



Utilities



Amenities

### TOP COAT

Twin pack, top coat and primer for a superior finish and durability

### TANGLE FREE

Swan neck designed pipe holder channels all pipes and cables away from the tractor linkage

### SMOOTH OPERATOR

Sprung drawbar with leaf spring for a smoother ride

Full length mud flaps for increased protection

Rectangular hollow section chassis for optimum strength





**CLEAN DESIGN**

Bevelled edges to eliminate materials gathering

**HIGH ACHIEVER**

Ergonomically designed rear door for greater clearance

LED lights with open guards to prevent material gathering

Plastic mudguards for added protection

Flotation tyres for field protection

Large 32 tonne capacity suspension for smoother ride and greater stability

**BETTER BRAKING**

Chrome plated tipping cylinders for protection against corrosion

Commercial axle for greater braking ability







“ BECAUSE WE WORK TO TIGHT TIMESCALES WE NEED TRAILERS THAT ARE RELIABLE AND WON'T LET US DOWN. THIS IS WHY WE RUN A FLEET OF BAILEY TRAILERS ”

TIM RUSSON, P RUSSON & SON, BURTON, LINCOLNSHIRE



**TB 8-11**



**FOR SMALLER LOADS . . .**



**Our 8-11 tonne TB trailers are designed for general-purpose haulage and are the ideal solution for farms, horticultural and contracting businesses that require a compact, dependable workhorse for all those smaller loads.**

Built for tough conditions all models are mounted on 8mm RHS chassis, which we've designed to eliminate material spillage onto the road or yard.

Protection against wear and tear is provided by heavy-gauge sides, strengthening channels and heavy-gauge floors with hollow section runners at 300mm centres which feature across the range. Long reach chromed tipping cylinders achieve approximately 50° of tip.

All TB 8-11 tonne trailers feature agricultural axles, fixed drawbar and swing door as standard.

### STANDARD FEATURES

- Hydraulic brakes, parking brakes
- Heavy-duty EN8 towing eye
- Skid & skid carrier
- Hydraulic hose carrier
- LED lights
- LED beacon
- Ladder
- Chromed rams
- Number plate holder
- Body prop

**FOR OPTIONAL EXTRAS SEE PAGES 54-55**



Model	Capacity m <sup>3</sup>	LxWxH mm	Loading height mm	Tyres	Axle(s) mm/stud	Sprung d/bar
TB 8	10.7	3900x2350x1225	2360	12.5/80x15.3	2x70/6	N/A
TB 9	11.9	4350x2350x1225	2360	435/50 R19.5	2x80/8	N/A
TB 11	13.8	4800x2500x1225	2550	385/65 R22.5	2x90/8	Option



**TB 12-15**



**WHEN YOU NEED AN ALL ROUNDER ...**



**Whether your work is arable, vegetable or silage, TB will haul the lot. Available from 15.8m<sup>3</sup> through to 34.2m<sup>3</sup>, TB could be the only trailer you need.**

TB is designed for tough off-road conditions. We mount all models on either an 8 or 10 mm RHS chassis; this clean design eliminates spillage of materials on road or yard.

On the move you're always in control. Heavy-duty commercial axles on tandem springs and a sprung drawbar featuring a leaf spring ensures the ride is smooth on all terrains, whether partially or fully loaded. The hydraulic braking system works in tandem with your tractor, which is vital when braking suddenly. Mudguards fitted as standard to protect the trailer against debris and surface spray.

To compensate for wear and tear when loading heavy materials, all models feature heavy-gauge sides, strengthening channels and heavy-gauge floors with hollow section runners at 300 mm centres. Long reach chromed tipping cylinders deliver approximately 50° of tip.

### Hydraulic rear door

The hydraulic rear door features a lock valve, which secures the door tightly, and a safety valve, which prevents the door from being opened when the trailer

is in the down position. Long reach 2 way rams are retained in any position to allow controlled discharge of free flowing loads, plus greater clearance for heaped loads.

### STANDARD FEATURES

- Sprung drawbar
- Hydraulic brakes
- 2xcom/10 axles
- Heavy-duty EN8 towing eye
- Parking brakes
- Hydraulic door
- Skid & skid carrier
- Hydraulic hose carrier
- Rear LED lights
- Ladder
- Rear top lights
- LED beacon
- Mudguards
- Chromed rams
- Number plate holder
- Body prop

FOR OPTIONAL EXTRAS SEE PAGES 54-55



Model	Capacity m <sup>3</sup>	LxWxH mm	Loading height mm	Tyres	Suspension
TB 12	15.8	5400x2500x1225	2550	385/65 R22.5	32 tonne 3 leaf
TB 14	18.7	6000x2500x1300	2620	385/65 R22.5	32 tonne 3 leaf
TB 15	19.7	6000x2500x1375	2700	385/65 R22.5	32 tonne 3 leaf



**TB 16-24**



**BUILT FOR HEAVY-DUTY HAULAGE . . .**



**Whether your work is arable, vegetable or silage, TB will haul the lot. Available from 21.7m<sup>3</sup> through to 51m<sup>3</sup>, TB could be the only trailer you need.\***

TB is designed for tough off-road conditions. We mount all models on either an 8 or 10 mm RHS chassis; this clean design eliminates spillage of materials on road or yard.

On the move you're always in control. Heavy-duty commercial axles on tandem springs and a sprung drawbar featuring a leaf spring ensures the ride is smooth on all terrains, whether partially or fully loaded. The hydraulic braking system works in tandem with your tractor, which is vital when braking suddenly. Mudguards fitted as standard to protect the trailer against debris and surface spray.

To compensate for wear and tear when loading heavy materials, all models feature heavy-gauge sides, strengthening channels and heavy-gauge floors with hollow section runners at 300 mm centres. Long reach chromed tipping cylinders deliver approximately 50° of tip.

### Hydraulic rear door

The hydraulic rear door features a lock valve, which secures the door tightly, and a safety valve, which prevents the door from being opened when the trailer

is in the down position. Long reach 2 way rams are retained in any position to allow controlled discharge of free flowing loads, plus greater clearance for heaped loads.

### STANDARD FEATURES

- Air brakes and load sensing
- Sprung drawbar
- Hydraulic brakes
- TB 16-20  
2xcom/10 axles
- TB 22-24  
3xcom/10 axles
- Heavy-duty EN8 towing eye
- Parking brakes
- Hydraulic door
- Skid & skid carrier
- Hydraulic hose carrier
- Rear LED lights
- Ladder
- Rear top lights
- LED beacon
- Mudguards
- Chromed rams
- Number plate holder
- Body prop

**FOR OPTIONAL EXTRAS SEE PAGES 54-55**



Model	Capacity m <sup>3</sup>	LxWxH mm	Loading height mm	Tyres	Suspension
TB 16	21.7	6600x2500x1375	2700	385/65 R22.5	32 tonne 3 leaf
TB 18	23.7	7200x2500x1375	2700	385/65 R22.5	32 tonne 3 leaf
TB 20	25.7	7800x2500x1375	2800	445/65 R22.5	32 tonne 3 leaf
TB 22	30.7	8400x2500x1375	2800	445/65 R22.5	48 tonne 3 leaf
TB 24	32.9	9000x2500x1375	2950	445/65 R22.5	48 tonne 3 leaf

\* 51 m<sup>3</sup> is inclusive of Silage Kit when fitted to 32.9 m<sup>3</sup> TB trailer.



**FOR OPTIONAL EXTRAS SEE PAGES 54-55**



# ROOT SPECIALS



WHEN YOU'RE LIFTING ROOT CROPS . . .



**Our Root Specials are designed specifically to meet the needs of root crop businesses.**

When harvesting root crops it's important to avoid unnecessary damage when loading, this is why our Root trailers are longer and lower than standard grain trailers. All models feature an arched window for improved visibility when loading. Tipping is controlled by long reach chromed cylinders capable of achieving approximately 50° of tip.

Root trailers are tough operators – an 8 or 10 mm RHS chassis provides the core strength. This clean design eliminates material spillage on road or yard. The hydraulic braking system works in tandem with your tractor, which is vital when braking suddenly.

To compensate for wear and tear when loading heavy materials, all fixed body models feature heavy-gauge sides, strengthening channels and heavy-gauge floors with hollow section runners at 300 mm centres. Rugged side ladders aid stability for operators when working above the trailer height.

On road or off road the ride is assured. Heavy-duty commercial axles on tandem springs and a sprung drawbar featuring a leaf spring ensures the ride is smooth on all terrains, whether partially or fully loaded. Mudguards fitted as standard to protect the trailer against debris and surface spray.

**STANDARD FEATURES**

- Air brakes and load sensing Root 15-24
- Sprung drawbar
- Hydraulic brakes
- Root 12-18  
2xcom/10 axles
- Root 20  
3xcom/10 axles
- 385/65 R22.5 tyres
- Heavy-duty EN8 towing eye
- Parking brakes
- Hydraulic rear door
- Arched full front window
- Skid full front window
- Skid & skid carrier
- Hydraulic hose carrier
- LED lights
- Side Ladder
- Rear top lights
- LED beacon
- Mudguards
- Chromed rams
- Body prop

**FOR OPTIONAL EXTRAS SEE PAGES 54-55**



Model	Capacity m <sup>3</sup>	LxWxH mm	Loading height mm
Root 12	16.2	6000x2500x1150	2440
Root 14	17.8	6600x2500x1150	2440
Root 15	19.7	7200x2500x1150	2440
Root 16	22.2	7800x2500x1150	2440
Root 18	23.02	8400x2500x1150	2500
Root 20	24.02	9000x2500x1150	2500



# BEETEAPER



**IF BEET IS YOUR BUSINESS . . .**



**Then you won't beat our Beeteaper trailers. This range is designed especially for transporting and heaping beet and features a unique tipping angle of approximately 60°.**

We fit longer side arms and rams, which enables the rear door to open higher when compared to conventional trailers. This extra clearance permits the heaping, scraping and levelling of beet to a height of around 9'.

An RHS chassis of either 8 or 10 mm provides the strength. This clean design eliminates material spillage on road or yard. The hydraulic braking system works in tandem with your tractor, which is important when braking suddenly.

To offset the wear and tear of loading heavy materials, our trailers feature heavy-gauge sides, strengthening channels and heavy-gauge floors with hollow section runners at 300 mm centres. We fit rugged side ladders to aid stability for operators when working above the trailer height.

All Beeteaper's are fitted with 10 stud heavy-duty commercial axles on tandem springs with air brakes as standard. Additionally, a sprung drawbar featuring a leaf spring ensures the ride is smooth on all terrains whether partially or fully loaded. Mudguards fitted as standard to protect the trailer against debris and surface spray. All models feature an arched window for improved visibility when loading.

Although our Beeteaper range is designed primarily for beet, it is just as dependable when transporting grain and other crops.

**STANDARD FEATURES**

- Air brakes with load sensing
- Sprung drawbar
- Hydraulic rear door
- Independent hydraulic brakes
- Heavy-duty EN8 towing eye
- Parking brakes
- Tandem springs
- 3 leaf 100 mm wide 32 tonne suspension
- Mudguards & flaps
- Flotation tyres
- Arched full front window
- Extra top lights on tail door
- LED lights
- LED beacon
- Chromed rams
- Body prop
- Side ladders
- Skid & skid carrier

**FOR OPTIONAL EXTRAS SEE PAGES 54-55**



Model	Capacity m <sup>3</sup>	LxWxH mm	Loading height mm	Tyres
Beet 16	22.0	6000x2500x1525	2970	560/60 R22.5 BKT FLT693
Beet 18	24.1	6600x2500x1525	2970	560/60 R22.5 BKT FLT693
Beet 20	26.1	7200x2500x1525	2970	650/50 R22.5 Alliance
Beet 22 - Triaxle	28.5	7800x2500x1525	2970	560/60 R22.5 BKT FLT693







**“ YOU LOOK AT THE STEEL, THE PLATE, HOW IT'S PUT TOGETHER, IT'S GOING TO LAST. THEY'RE BUILT EXTREMELY WELL AND THEY'RE BRITISH. ”**

**NICK YOUNGS, SANKENCE FARM, AYLSHAM, NORFOLK**





Bailey

**CLAAS** LEXION 580

*Terra*

logrecom

AU66 BMR

Bailey  
www.baileytrucks.co.uk

Bailey  
www.baileytrucks.co.uk



## SHEETING SYSTEMS



GET OUT WHAT YOU PUT IN . . .

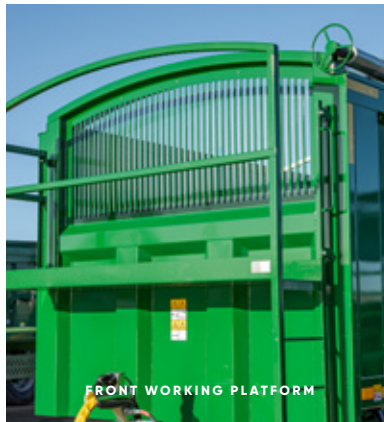


## ROLLOVER SHEET

Your crops are your livelihood. Our Rollover Sheet is designed to protect your crops from the damaging effects of wind, rain and vermin. Manufactured from heavy-gauge Silver PVC with high quality hardwearing fittings, Rollover Sheets are available across our range of trailers.

The built in operating mechanism featuring tie down ratchet straps is configured to provide full door opening without having to unroll the sheet. A stowed operating handle is mounted on the trailer side. Please ask us about our fitting service.

Please note the sheet is stowed on the offside on our Root Specials trailer. The sheet is stowed on the nearside on our TB and Beeteeper trailers.



**OPTIONAL EXTRA**  
Front working platform

## HYDRAULIC SIDE TO SIDE SHEET

Our Hydraulic Side to Side Sheet is designed to protect your crops in all kinds of weather.

This sheet is stored neatly on either the near side or off side of the trailer and is operated from within the tractor, in line with the Grain Storage Health and Safety regulations.



## HYDRAULIC FRONT TO BACK SHEET

Our Hydraulic Front To Back Sheet is designed to prevent crops from blowing out of the trailer and onto the road.

Operated with ease from within the tractor cab, this non-waterproof sheet is stored neatly at the front of the trailer and unrolls to the back via side arms mounted on springs.





## CONTRACT TIPPER



ON SITE OR ON FARM . . .



**Our Contract Tipper is the perfect solution for hauling either topsoil or stone. Additionally, when specified with the optional extension sides this trailer is ideal for hauling significant amounts of grain.**

We build our Contract Tipper on a rugged, heavy-duty RHS bottom chassis. The axles are mounted on tandem springs for stability over a variety of terrains. Further strength is gained from the reinforced sides and floor, which makes this trailer a stronger option when compared to conventional grain trailers.



### STANDARD FEATURES

- Air brakes with load sensing CT17-CT28
- Hydraulic door
- Hydraulic brakes
- Heavy-duty EN8 towing eye
- Parking brakes
- CT14-CT28 Mudguards & tail door lights
- Heavy-duty floors and sides
- Front aggregate guard
- LED lights
- LED beacon
- Chromed rams
- Body prop

FOR OPTIONAL EXTRAS SEE PAGES 54-55



### OPTIONAL EXTRAS

Harder wearing floor & sides  
Aluminium ramps

Model	Capacity m <sup>3</sup> **	LxWxH mm	Loading height mm	Tyres	Axle(s) mm/stud	Thickness (mm)		Sprung d/bar
						Floor	Side	
CT 8	5.41	3750x2500x600	1660	435/50 R19.5	2x80/8	8	6	N/A
CT 10	6.82	4000x2500x700	1775	435/50 R19.5	2x90/8	8	6	Option
CT 12	7.90	4500x2500x800	2050	385/65 R22.5	2xcom/10	8	6	Option
CT 14	10.6	5000x2500x900	2200	385/65 R22.5	2xcom/10	8	6	STD
CT 17	12.9	5500x2500x1000	2300	385/65 R22.5	2xcom/10	10	8	STD
CT 20	14.1	6000x2500x1000	2450	445/65 R22.5	2xcom/10	10	8	STD
CT 24	16.6	6500x2500x1100	2550	445/65 R22.5	3xcom/10	10	8	STD
CT 28	18.0	7000x2500x1100	2550	445/65 R22.5	3xcom/10	10	8	STD

\*N.B. Check actual capacities against the competition... are you costing like for like?

## AGRICULTURAL DUMPER



FOR HEAVY-DUTY WORK . . .



**Agricultural Dumpers feature a heavy-duty RHS bottom chassis mounted on a heavy-duty tandem spring unit. This provides additional strength and durability.**

An impressive tipping angle is achieved via twin extra-long reach 3 stage hydraulic cylinders.

To protect against wear and tear Agricultural Dumpers are built with 4mm sides, strengthening channels and 4mm floors with hollow section runners at 300 mm centres. Fitted on a heavy-duty tandem suspension.



### STANDARD FEATURES

- Independent hydraulic brakes
- Sprung drawbars (on 12, 14 & 16)
- Heavy-duty EN8 towing eye
- Parking brakes
- Mudguards on chassis
- Skid & skid carrier
- LED lights
- LED beacon
- Chromed rams
- Body prop

FOR OPTIONAL EXTRAS SEE PAGES 54-55



Model	Capacity m <sup>3</sup>	LxWxH mm	Loading height mm	Tyres	Axle(s) mm/stud	Sprung d/bar
Dump 8	11.50	4630x2500x1225	2415	435/50 R19.5	2x80/8	Option
Dump 10	13.80	5430x2500x1225	2570	385/65 R22.5	2x90/8	Option
Dump 12	16.50	6030x2500x1300	2645	385/65 R22.5	2xcom/10	STD
Dump 14	19.50	6030x2500x1525	2870	385/65 R22.5	2xcom/10	STD
Dump 16	21.70	6630x2500x1525	2920	385/65 R22.5	2xcom/10	STD



## CONTRACT DUMPER



SOLID AS A ROCK...



**Designed for hauling aggregates in severe off-road conditions, the quality, reliability and durability of our Contract Dumper is everything you'd expect from a Bailey trailer.**

Our Contract Dumper is rock solid. The floor thickness increases per the size of trailer – 6 mm floor (4 tonne), 8 mm floor (6, 8, 10, 12, 14 tonne) and 10mm floor (17, 20 & 22 tonne). The RHS top chassis includes a RHS cross member and 4 mm sides (4 tonne), 6 mm sides (6, 8, 10, 12 & 14 tonne) and 8 mm (17, 20 & 22 tonne) with RHS frame. A deep section box is fitted to withstand stone, concrete, rubble and other hardcore materials.



A heavy-duty RHS bottom chassis is mounted on a heavy-duty tandem spring unit.

**STANDARD FEATURES**

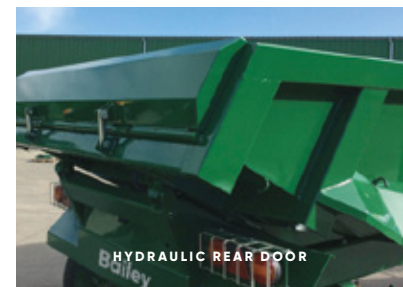
- CD4-CD14 independent hydraulic brakes
- CD17-CD22 Air brakes and load sensing
- Heavy-duty EN8 towing eye
- Parking brakes
- Hydraulic hose carrier
- Mudguards
- Front aggregate guard
- LED lights to RTA
- LED beacon
- Chromed rams
- Body prop
- Skid & skid carrier

FOR OPTIONAL EXTRAS SEE PAGES 54-55



Model	Capacity m <sup>3</sup> *	LxWxH mm	Loading height mm	Tyres	Axle(s) mm/stud	Sprung d/bar
CD 4 T	3.25	3250x2350x500	1600	400/60x15.5	2x70/6	N/A
CD 8	4.60	3445x2350x700	1800	12.5/80x15.3	2x70/6	N/A
CD 10	5.30	3650x2500x700	1840	435/50 R19.5	2x90/8	Option
CD 12	6.84	4050x2500x800	2135	385/65 R22.5	2xcom/10	Option
CD 14	8.15	4660x2500x900	2210	385/65 R22.5	2xcom/10	Option
CD 17	9.98	4960x2500x1000	2340	385/65 R22.5	2xcom/10	STD
CD 20	12.33	5460x2500x1100	2440	445/65 R22.5	2xcom/10	STD
CD 22	13.60	5960x2500x1100	2440	445/65 R22.5	2xcom/10	STD

\*N.B. Check actual capacities against the competition . . . are you costing like for like?



**OPTIONAL EXTRAS DUMPERS ONLY**

Hydraulic rear door  
Harder wearing floor & sides







“ WE’VE RUN BAILEY TRAILERS FOR OVER THIRTY YEARS, THEY’VE ALWAYS LISTENED TO US AND BUILT EXACTLY WHAT WE’VE WANTED ”

RICHARD FENTON, R J FENTON, MELTON MOWBRAY, LEICESTERSHIRE



## DROP DECK LOW LOADER





We've designed our range of Drop Deck Low Loader trailers so that the bed of the trailer lowers to the ground to enable easy and quick loading of implements, small crawlers and drills.

The 2500 mm wide bed on the single axle model is raised and lowered via two large tipping cylinders at the rear and by a tractor pickup hitch at the front. Available in 8 tonne capacities only. Because we link the hydraulic rear axle to the spool on the tractor you can lock the back axle in transport mode without leaving the cab.

### STANDARD FEATURES

- Independent hydraulic brakes
- Parking brakes
- Heavy-duty EN8 towing eye
- 385/65 R22.5 tyres on 90 mm 8 stud wheels
- Chequer plate floor
- Loading ramps
- Mudguards
- LED lights
- Number plate
- Rear mudflaps
- LED beacon
- 4 lashing rings in the floor and toolbox

FOR OPTIONAL EXTRAS SEE PAGES 54-55



### Optional extras

Air brake kit, commercial axle, agricultural steering axle, bespoke colours available on request.

Model	Length mm (feet/inches)
Low 8/48	4800 (15'9")
Low 8/54	5400 (17'9")
Low 8/60	6000(19'8")
Low 8/66	6600(21'8")
Low 8/72	7200 (23'7")



**OPTIONAL EXTRA**  
Agricultural steering axle



## FLAT DECK LOW LOADER



WHATEVER THE LOAD . . .



From small machines to medium bales. Our Flat Deck Low Loaders are available in 15 & 20 tonnes and are mounted on tandem or tridem springs. Features include: 38 mm hardwood planed floor, fully road legal lights and commercial axles as standard. All models are 2500 mm/8'2" overall width, and a deck height of 900 mm with addition of outriggers if required. The Flat Deck Low Loader is built to the same specification as the Beavertail, but is flat to the back and comes with aluminium loading ramps complete with a storage rack underneath.

## STANDARD FEATURES

- FD15 Independent hydraulic brakes
- FD20 air brakes and load sensing
- Parking brakes
- Heavy-duty EN8 towing eye
- Sprung drawbar
- Commercial axles
- 215/75 x 17.5 twins
- Aluminium loading ramps
- Hardwood floor
- Skid & skid carrier
- LED lights
- Number plate holder
- Rear mudflaps
- LED beacon
- Lashing rings in the floor
- Strap points
- Toolbox



Model	Length mm (feet/inches)
Flat Deck 15 (Tandem axle)	6000 (19'8")
	7000 (22'11")
	8000 (26'3")
	9000 (29'6")
	10000 (32'10")
	11000 (36'1")
Flat Deck 20 (Tri axle, air brakes as standard)	8000 (26'3")
	9000 (29'6")
	10000 (32'10")
	11000 (36'1")
	13000 (42'8")



## OPTIONAL EXTRAS

- Pullout side markers with beacon
- Digger stops
- Outriggers
- Side guards for Flat Deck Low Loader
- Bucket restraints at front
- Bucket rest at rear, 1200mm square
- Mud flaps between wheels
- Air brake kit
- ABS Brakes (high speed only)
- Bale ladders (900mm)
- Bale ladders (1500mm)
- Bale ladders (Lent Back)
- Hi-Vis strips
- 80 x 80x1200mm bolsters
- Twist Locks x4 / x6
- Side posts
- Sockets
- Sockets and side posts





## BEAVERTAIL LOW LOADER



**SAFE AND SECURE . . .**

Beavertail Low Loaders are available in 15 & 20 tonnes and are mounted on a tandem or tri-axle springs. Features include: hydraulic 900 mm wide loading ramps, 38 mm hardwood planed floor, fully road legal lights, heavy-duty axles and wheels are standard. All models are 2500 mm overall width, and a deck height of 900 mm with addition of outriggers if required.



### STANDARD FEATURES

- Low 15 B/T independent hydraulic brakes
- Low 20 B/T air brakes and load sensing
- Parking brakes
- Heavy-duty EN8 towing eye
- Commercial axles
- 215/75x17.5 twins
- 1500 mm Beavertail
- Hydraulic loading ramps
- Hardwood floor
- Skid & skid carrier
- LED lights
- Number plate holder
- Rear mudguard and flaps
- LED beacon
- Lashing rings in the floor
- Strap points
- Toolbox

### OPTIONAL EXTRAS

- Pullout side markers with beacon
- Digger stops
- Outriggers
- Side guards for Beavertail Low Loader
- Bucket restraints at front
- Bucket rest at rear, 1200mm square
- Longer hydraulic ramps – toe tip
- Wooden loading ramps
- Mud flaps between wheels
- Beavertail fill in
- Hydraulic Beavertail fill in
- Air brake kit
- ABS Brakes (high speed only)
- Hi-Vis strips
- Rear well
- Bale ladder front (900mm)
- Hydraulic side to side ramps 600mm wide
- Twist Locks x4 / x6
- Side posts and straps



Model	Length mm	Overall Body Length mm	Axle(s) mm/stud	Brakes
Low 15 B/T	5500 + 1500 Beavertail	7000	2xcom/10	Hydraulic Brakes
	6500 + 1500 Beavertail	8000	2xcom/10	Hydraulic Brakes
	7500 + 1500 Beavertail	9000	2xcom/10	Hydraulic Brakes
	8500 + 1500 Beavertail	10000	2xcom/10	Hydraulic Brakes
Low 20 B/T	6500 + 1500 Beavertail	8000	3xcom/10	Air Brakes
	7500 + 1500 Beavertail	9000	3xcom/10	Air Brakes
	8500 + 1500 Beavertail	10000	3xcom/10	Air Brakes
	9500 + 1500 Beavertail	11000	3xcom/10	Air Brakes
	10500 + 1500 Beavertail	12000	3xcom/10	Air Brakes
	11500 + 1500 Beavertail	13000	3xcom/10	Air Brakes





## BALE & PALLET



FROM BALES TO BOXES . . .



Bale and Pallet trailers are mounted on 8 or 10 mm RHS chassis with heavy-duty axles on tandem springs. All models are 2500 mm/8'2" overall width and fitted with a 4.5 mm chequer plate floor with 60 x 40 RHS floor runners at 300 mm centres. Bale trailers have heavy-duty 8 mm side rails and a 600 mm high headboard for safe and secure loading of pallets, bags and boxes. Features include: hydraulic working platform to aid filling of potato boxes; Box Pusher and Rollover Sheet for safe transportation of load.



### STANDARD FEATURES

- Flat 6-14 independent hydraulic brakes
- Flat 16-20 air brakes and load sensing
- Parking brakes
- Heavy-duty EN8 towing eye
- Hydraulic hose carrier
- Skid & skid carrier
- Chequer plate floor fitted as standard; state if flat floor required
- LED lights & beacon
- Strap points
- Front steps
- Number plate holder and toolbox



### OPTIONAL EXTRAS

- 30 mm hardwood floors
- Hydraulic box pusher
- Turntable model
- Hydraulic tilting drawbar
- Hydraulic clamp (850mm high)
- Hydraulic bale clamps (1700mm high)
- Hydraulic bale clamps (2380mm high)
- Hydraulic bale clamps (3060mm high)
- Hydraulic working platform
- Side posts & rails
- Side post (removable)
- Sockets for side posts
- Side posts & straps
- Rollover Sheet (front to back)
- Rope hooks
- Non standard length
- Adjustable rear ladder 900 mm
- Hay ladders (900 mm front)
- Hay ladders (1500 mm rear)
- Leant back ladder
- Extra length (450mm)
- Air brake kit
- ABS Brakes (high speed only)
- Curtain Sider

Model	Length mm (feet/inches)	Loading height mm	Tyres	Axle(s) mm/stud	Sprung d/bar	Brakes
Flat 6	5700 (18'8")	1020	12.5/80x15.3	1x70/6	N/A	Hydraulic Brakes
Flat 8	6600 (21'8")	1070	12.5/80x15.3	2x70/6	Option	Hydraulic Brakes
Flat 10	7500 (24'7")	1220	385/65 R22.5	2x90/8	Option	Hydraulic Brakes
Flat 12	8400 (27'7")	1220	385/65 R22.5	2x90/8	Option	Hydraulic Brakes
Flat 14	9300 (30'6")	1220	385/65 R22.5	2xcom/10	Option	Hydraulic Brakes
Flat 16	10200 (33'6")	1220	385/65 R22.5	2xcom/10	STD	Air Brakes
Flat 18	11100 (36'5")	1270	385/65 R22.5	2xcom/10	STD	Air Brakes
Flat 20*	12000 (39'4")	1070	435/50 R19.5	4xcom/10	N/A	Air Brakes

\* The flat 20 is a tri-axle rear and a single axle at the front with a fifth wheel coupling.



# BALE & PALLET

## LESS TIME AND MORE SECURE...

Our Hydraulic Bale Clamps provide the perfect solution for moving high volumes easily, quickly and safely. Loading couldn't be simpler; we've designed each side to lower below the height of the trailer bed. Additionally, because both sides are powered independently you can select either nearside or offside loading to fit your needs. The simple press of a button raises the clamps and the load is totally secured. From start to finish loading is a matter of seconds and you're ready for safe transit across field and road. Please note that when operating the trailer bales must be stacked neatly, the function of the clamps is not for correcting poorly stacked loads.



### Twin Bale Clamps

You can now load bales to a height of three Hesston's with our new Twin Bale Clamps. This latest innovation provides contractors and large-scale farm businesses the ability to further reduce the number of loads, saving valuable time and fuel.



Our 850mm high clamp is ideal for potato boxes, fertiliser and seed bags



# LIVESTOCK CONTAINER

## LIFT ON FOR LIVESTOCK . . .

### STOCKBOX

**Aluminum Stock Boxes fit all models throughout our Bale Trailer and Flat Deck ranges. Built to your required length, these boxes feature fixed position slam-shut doors, spring assisted loading ramps, extra rear lights and an internal light.**

The box is easily secured to the trailer by 4 brackets with ratchet straps, which provide quick fitting and removal. All livestock trailers have to be supplied with tandem springs as standard.

Deluxe models with section decks and fixed position slam-shut doors, also come with hydraulic sheep decks.

We recommend 435 / 50 / 19.5 wheels for a lower ride height and a reduced ramp angle for loading.



Slam shut doors for easier loading.



### OPTIONAL EXTRAS

Slurry Box.  
Inspection doors



To Suit Bale Trailers	
Length mm	No. of doors
5700	1
6600	1
7500	1
8400	2
9300	2
10200	2

To Suit Flat Deck Trailers	
Length mm	No. of doors
6000	1
7000	1
8000	2
9000	2
10000	2
11000	3
12000	3
13000	3









“OUR BUSINESS HAS RELIED ON BAILEY TRAILERS FOR OVER EIGHTEEN YEARS, THEY ARE SOLID, DEPENDABLE TRAILERS. WE TEND TO RENEW OUR FLEET EVERY FIVE YEARS, THIS IS ALWAYS A VIABLE OPTION DUE TO THE FANTASTIC RESIDUAL VALUE”

ANDREW GLOAG, GLOAG & SONS, STOKESLEY, NORTH YORKSHIRE



# DROPSIDES

## COMPACT AND VERSATILE . . .

Suitable for a multitude of applications from hill farms and small construction sites, to market gardens and golf courses. Dropsides are compact, versatile trailers designed for carrying materials such as sand, gravel, green waste and manure.

### STANDARD FEATURES

- Independent hydraulic brakes
- Sprung drawbar DS12 only
- Parking brake
- High hinged tail door
- Dropsides
- LED lights
- Chromed rams
- LED beacon
- Number plate holder
- Body prop



FOR OPTIONAL EXTRAS SEE PAGES 54-55

Model	LxDxW mm	Tyres	Axle(s) mm/stud	Sprung d/bar
DS 4	3000x450x2200	11.5/80x15.3	1x70/6	N/A
DS 6	3450x450x2200	12.5/80x15.3	1x70/6	N/A
DS 8	3900x525x2350	12.5/80x15.3	2x70/6	N/A
DS 9	4350x525x2350	435/50 19.5	2x80/8	N/A
DS 11	4800x600x2500	385/65 R22.5	2x90/8	Option
DS 12	5400x600x2500	385/65 R22.5	2xcom/10	STD

### OPTIONAL EXTRA

Hydraulic locking rear door

## BLOWER TRAILER

### FOR INDOOR FEED . . .

The Blower Conversion kit is available on our TB range of trailers from 16 tonne upwards. Designed for use in poultry and livestock houses, the Priden Engineering blowing unit ensures efficient distribution of grain, chicken and other feeds.



**OPTIONAL EXTRA**  
Internal partition



## HIGH LIFT

### IF YOU NEED MORE HEIGHT . . .

The 14 tonne High Lift trailer features a sprung drawbar and commercial axles mounted on heavy-duty tandem springs. The main function of High Lift is discharging loads into elevated bulkers giving a clearance under the tail door of 4.75 metres. A hydraulic door is fitted as standard with a choice of door from our TB range or a non-spill pea door. Standard on 385/65 R22.5 wheels, air brakes and load sensing, 6 metres long, 2500 wide and body of 1225 deep. Body prop as standard.





# FUEL BOWSER

## REFUEL IN THE FIELD . . .

Our Fuel Bowser features a 2000 ltr fully bunded tank, with a 12v, 85 L/min pump positioned for easy access which is protected by a locking top panel. Also with lockable double back doors incorporating a 220 litre Adblue tank with pump and auto gun plus a storage shelf.

### STANDARD FEATURES

- Brakes
- Flow meter
- 220 litre Adblue tank
- 10 metre retractable hose with auto gun and rear storage compartment
- Mudguards
- LED lights
- Screw jack or shoe
- Number plate holder
- The Standard Bowser is designed to be towed by a motor vehicle

FOR OPTIONAL EXTRAS SEE PAGES 54-55



# WATER BOWSER

## YOUR PORTABLE WATER SUPPLY . . .

Our range of Water Bowser's features 4 capacity options of 12,000, 15,000, 16,500 and 18,000 litres. All models feature an elliptical, low centre of gravity translucent fibreglass tank. We specify a true fixed baffle tank, which reduces sloshing and offers greater stability. Our Water Bowsers are all mounted on a heavy-duty RHS chassis, feature commercial axles and a sprung drawbar with a multi-leaf drawbar spring.

### STANDARD FEATURES

- Air brakes and load sensing
- Heavy-duty 100 mm wide suspension
- Commercial axles
- 385/65 R22.5 10 stud remould tyres
- Diesel pump
- Wheels covered by plastic mudguard
- 1000 L/min pump on 3" (75mm) outlets
- 2 x extra long 3" hoses with Snaplock couplings and stainless steel storage rack for hoses on both sides
- Stainless steel side lockers and rear locker featuring work lights and internal light
- Front platform to carry standard IBC container
- Sight gauge

FOR OPTIONAL EXTRAS SEE PAGES 54-55





# PEOPLE CARRIER

## THE ULTIMATE PEOPLE CARRIER . . .

Our people carrier is perfect for tours around farms, farm parks and transportation of people at outdoor events.

### STANDARD FEATURES

- Hydraulic brakes
- Tandem axles on 300/80x15.3 wheel assemblies
- Wooden forward facing seats
- Canvas roof and canvas side windows,
- LED lights
- Front mounted access for safe boarding and exiting
- Retractable lap belts
- Anti-slip gangway and step covering

FOR OPTIONAL EXTRAS SEE PAGES 54-55



Number of seats	Body Length
23 seats	5600mm
31 seats	7200mm
39 seats	8800mm

### OPTIONAL EXTRAS

- Cushioned seats per person
- Wheel chair ramps & storage
- Internal lights
- Hi-Vis strips



# TYRES



MICHELIN CARGO XB11B

NOKIAN COUNTRY KING

CEAT RT

ALLIANCE A882

We have chosen a comprehensive range of tyres that best suits our trailers. These tyres are our most popular but we do offer other sizes and brands, please ask for details. Not every tyre size will fit every trailer model, please ask for details.

*Please note: for 50 km/h tractors doing a lot of road work we recommend the radial option – if the tractors are 40 km/h and on an enclosed farm without a great deal of roadwork then cross-ply is an option.*

Size	Make
10.5/70 x 15.3	(260/70 x 15.3) NEW
11.5/80 x 15.3	(300/80 x 15.3) NEW
12.5/80 x 15.3	NEW
400/60 x 15.5	NEW
500/50 x 17	Cross-ply
435/50 R19.5	NEW (160 J)
445/45 R19.5	NEW
385/65 R22.5	Remould (15R – 22.5)
385/65 R22.5	NEW
445/65 R22.5	NEW
560/45 R22.5	Nokian CK (152 D)
560/45 R22.5	Alliance A882 (152 D)
560/45 R22.5	BKT FL693 (152 D)

Size	Make
500/60 R22.5	Michelin Trail XBIB (155 D)
560/60 R22.5	CEAT RT (165 D)
560/60 R22.5	Alliance A882 (165 D)
560/60 R22.5	Michelin Trail XBIB (166 D)
560/60/R22.5	Nokian CK (161 D)
560/60 R22.5	Nokian CT (165 D)
560/60 R22.5	Alliance 590 (169 D)
560/60 R22.5	BKT FL693 (165 D)
650/50 R22.5	Alliance 885 (163 D)
650/50 R22.5	Nokian Country King (163 D)
710/45 R22.5	Michelin Trail XBIB (165 D)
650/55 R26.5	Nokian CT (177 D)
650/55 R26.5	Alliance 882 (170 D)









**“ OUR BAILEY TRAILERS ARE CRITICAL TO THE  
SMOOTH RUNNING OF OUR BUSINESS ”**

**RICHARD PARRIS, A P & SM PARRIS & SON,  
TAUNTON, SOMERSET**



# OPTIONAL EXTRAS

## Windows

- Front window
- Full front window
- Arched full front window
- Extra high arched (Gypsy Caravan)
- Extra deep arched (1000 deep)

## Sheeting

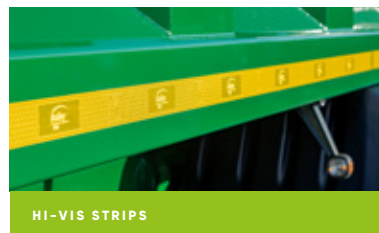
- Roll over sheet (Easy Sheet)
- Hydraulic Side to Side
- Front to back sheeting system (hydraulic)
- Fitted weather sheet
- Front working platform

## Doors

- Hydraulic operated door
- Barn doors
- Grain chute with handle
- Grain sock
- Grain sampler
- Potato chute

## Sides & Floors

- Extra depth per 75 mm
- Extension sides (300mm or 450mm)
- Hydraulic sides (per side)
- Extra thick floor (per mm)
- Extra thick sides (per mm)
- Harder wearing flooring



# OPTIONAL EXTRAS

## Lights

- Extra flashing beacon
- On/off switch for flashing beacon
- Reversing lights & mud flaps
- Internal light
- Extra lights on rear door
- High visibility safety strips

## Miscellaneous

- Aluminium ramps
- Anti-chip point (headboard)
- Bale extension with rear lights (900 long)
- Bale extension with rear lights (1200 long)
- Fold up trailer skid (shoe)
- Greasing bank – suspension and axles
- Greasing bank – hydraulic door
- Hinged rear draw bar – hydraulic to rear
- Hinged rear draw bar – hydraulic & air to rear
- Jack – screw
- Jack – hydraulic
- Jack – hydraulic with hand pump
- Reversing camera
- Sprung drawbar
- Storage rack (bolt on)
- Twin tipping pipes
- Toolbox
- Electric/hydraulic weighing system
- Load cell weigh system
- Wooden nudge bar
- Wheel nut indicators
- Single hydraulic tipping ram

## Towing Eyes

- Rear towing eye (loops)
- Towing swivel eye
- Scharmuller Hitch – Swivel
- Scharmuller Hitch – (Cup) Ball
- Scharmuller Hitch – Hitch Eye

## Guards, Brakes, Suspension

- Mudguards (plastic with flaps)
- Mudguards (metal with flaps)
- Steering commercial axle
- Front rubber mud flaps
- ABS brakes (high speed only)
- Auto slack adjusters per axle
- Air brake kit
- Hydraulic brake load sensing
- Air suspension
- Axle upgrade 406 x 120 to 420 x 180
- Axle upgrade 420 x 180 to 420 x 220
- Axle upgrade from commercial tandem to commercial triaxle

## Colour options (all trailers)

- Fendt Green
- Massey Red
- Case Red
- New Holland Blue
- JCB Yellow
- John Deere Green
- Black
- Bespoke colours available on request

## TAILOR YOUR TRAILER . . .

Our range of options are specially designed and tested to ensure optimum functionality, safety and quality. Explore the range and see how you can equip your trailer to suit your needs.



STEERING AXLE



WHEEL NUT INDICATORS



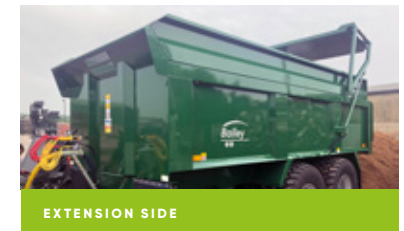
TOOLBOX



FRONT WORKING PLATFORM



SINGLE RAM



EXTENSION SIDE



# FEATURES & BENEFITS

## Paint

Twin pack process for superior gloss finish and greater durability

Unbeatable protection against corrosion if care and maintenance instructions followed

## Drawbar

Multiple options available – sprung and standard

Sprung drawbar features multi-leaf drawbar spring at the back for efficient haulage whether 1 or 3tonne of drawbar weight on the trailer

Multi-positional hole at the back of the sprung drawbar to alter drawbar pitch on any tractor

Minimal maintenance requiring greasing once a week (depending on conditions)

## Hitch

All models fitted with heavy-duty EN8 forged steel towing eye or the option of a Scharmuller cup and ball

## Brakes

All models (except fuel bowser) equipped with hydraulic braking

Twin line air brakes available for commercial axles

## Connections

All hydraulic connection hoses are routed through a 'swan neck' pipe holder

'Swan neck' design enables quicker connection to tractor, minimises entanglements and trapping and keeps hoses away from tractor wheels

All hydraulic connectors equipped with self-sealing, quick-release couplers

Hoses lock into storage position via dummy connections fastened to the chassis

## Front

Arched window backed with 6mm perspex standard on Root Specials and Beeteaper models

Internal steps available as option or retro fit

## Body

CAD generated components are produced on semi-automated machine tools for greater accuracy and quality

All models fully welded construction

Floor plates available from 4mm to 12mm thickness and reinforced with 60 x 40mm mild steel bearers at 300mm centres along the floor length

All models welded using highest standard of MIG and robotic welding processes

Steel cut using nitrogen to eliminate oxidised edges for better paint adhesion

Integrated single weld structure of floor and side member provides smoother ejection of material from sides during wet conditions

All trailer sides all fully seam welded

## Chassis

All chassis constructed from RHS steel

Twin beam construction supplemented by RHS cross members for strength and flexibility

## Lights

Light guards open at bottom to allow grain to fall through for safe operation on the road

Additional beacon or LED light options provide better visibility for safer transit on road

## Hinged rear drawbar

A rear mounted towing position can also be provided offering the possibility of multiple trailer towing, shunting or recovery.

## Plastic mudguards

Black plastic mudguards are knock resistant and will not rust and protect the trailer against road and field spray.

# FEATURES & BENEFITS



PAINT



SPRUNG DRAWBAR ADJUSTMENT



SCHARMULLER CUP BALL



TOWING SWIVEL EYE



SWAN NECK PIPE HOLDER



ARCHED WINDOW



CAD GENERATED COMPONENTS



FULLY WELDED CONSTRUCTION



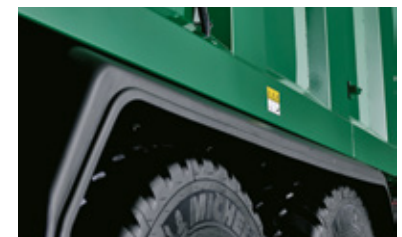
CHASSIS CONSTRUCTION



LIGHT GUARDS



REAR TOWING



PLASTIC MUDGUARDS









“

**FOR ME THE NAME BAILEY MEANS RUGGED AND RELIABLE TRAILERS  
BACKED BY A FAMILY THAT CARES ABOUT MY BUSINESS**

”

**JEREMY GREEN, JEREMY GREEN AGRICULTURAL  
CONTRACTOR, BRESSINGHAM, NORFOLK**



**YOUR NEAREST BAILEY TRAILERS DEALER**



**BAILEY TRAILERS LIMITED**

Pride Parkway, Sleaford, Lincolnshire NG34 8GL

☎ +44 (0) 1529 303411 ✉ sales@baileytrailers.co.uk

**FOLLOW THE LEADER**

#BaileyTrailers



**baileytrailers.co.uk**

All references in this publication to operating weights, sizes, capacities and other performance measurements are provided for guidance only and may vary dependent upon the exact specification of the product. They should not therefore be relied upon in relation to suitability for a particular application. Guidance and advice should always be sought from your Bailey Trailers dealer. Bailey Trailers Limited reserves the right to change specifications without notice. Illustrations and specification shown may include optional equipment.



This publication was printed by an FSC® certified printer that holds an ISO 14001 certification.